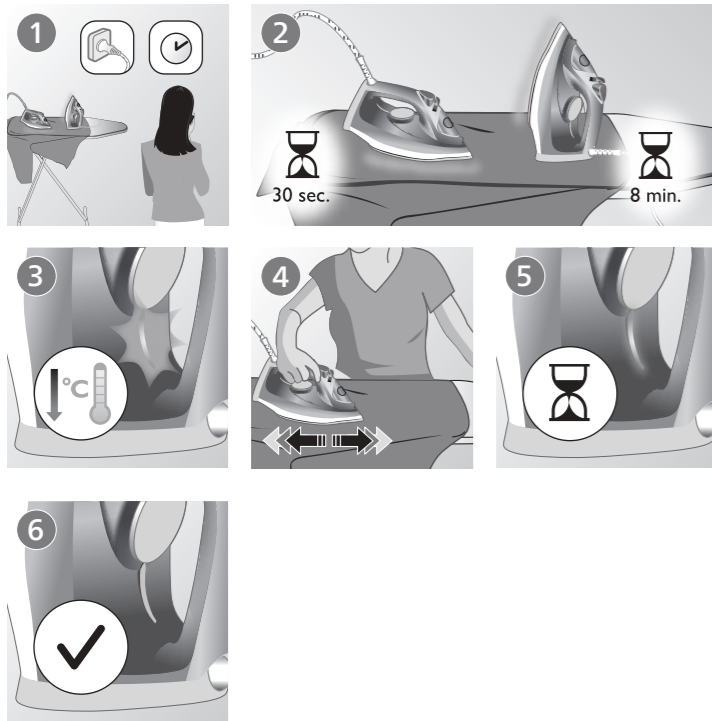


3

Auto Shut Off

www.philips.com/support

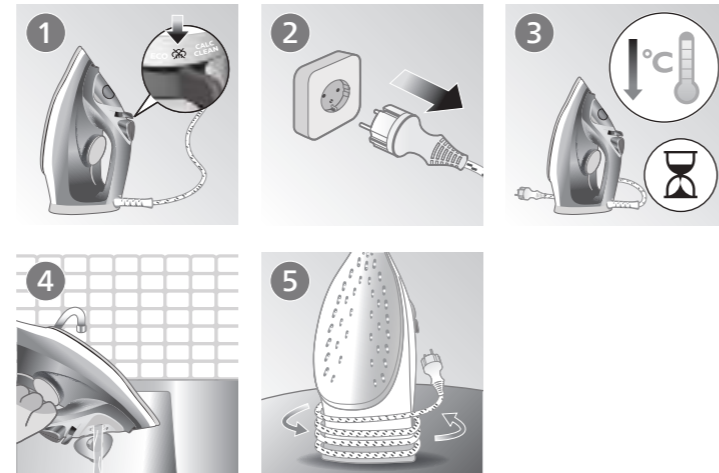


EN Specific types only
 FR Certains modèles uniquement
 PT Apenas tipos específicos
 FA فقط مدل‌های خاص
 AR أنواع محددة فقط

4



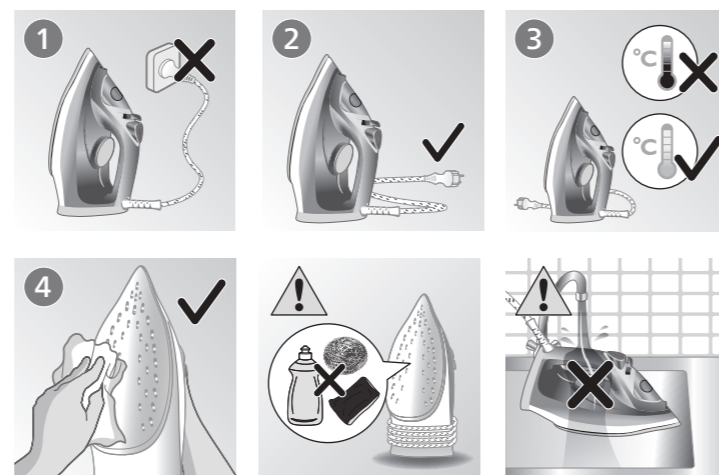
www.philips.com/support



5



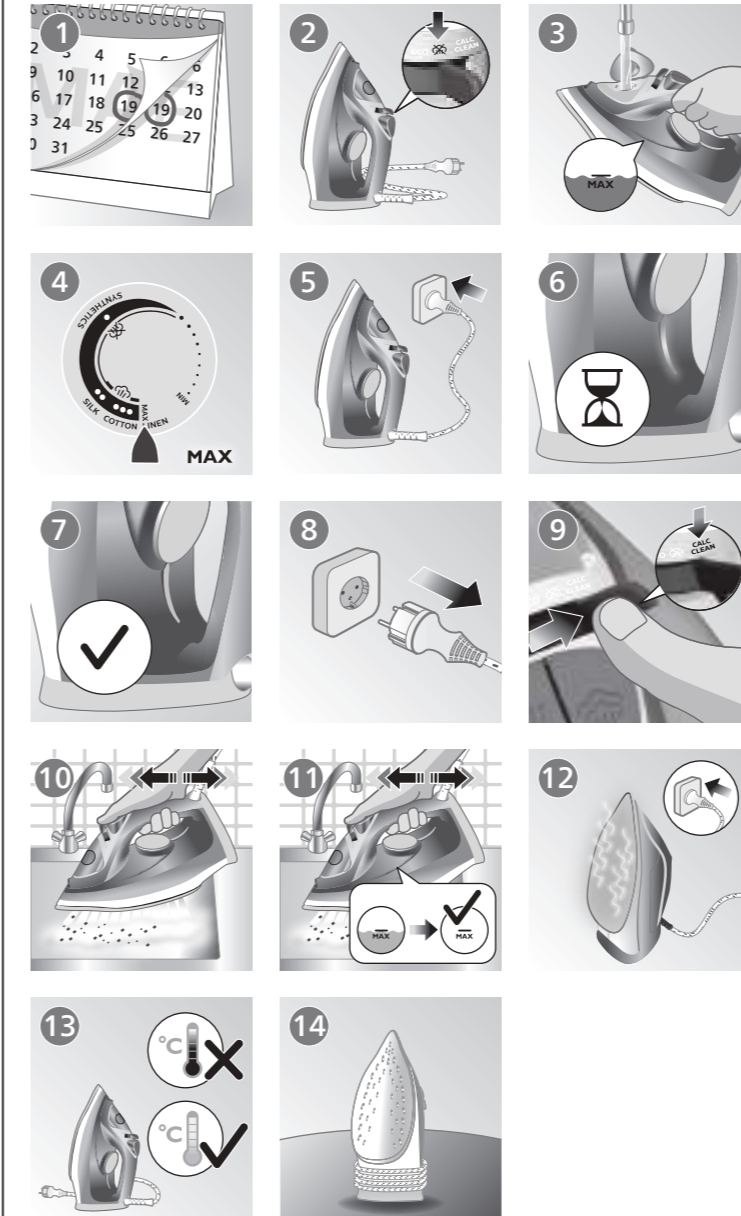
www.philips.com/support



6

CALC CLEAN 1 month

www.philips.com/support



PHILIPS

DST3010, DST3011
DST3020, DST3021
DST3030, DST3031
DST3040, DST3041



EN User manual

FR Mode d'emploi

PT Manual do utilizador

AR دليل المستخدم

FA راهنمای کاربر



PHILIPS and the Philips Shield Emblem are registered trademarks of Koninklijke Philips N.V. and are used under license. This product has been manufactured by and is sold under the responsibility of Versuni Holding B.V., and Versuni Holding B.V. is the warrantor in relation to this product.
 2023 © Versuni Holding B.V.
 4239.001.2096.3 (22/05/2023)





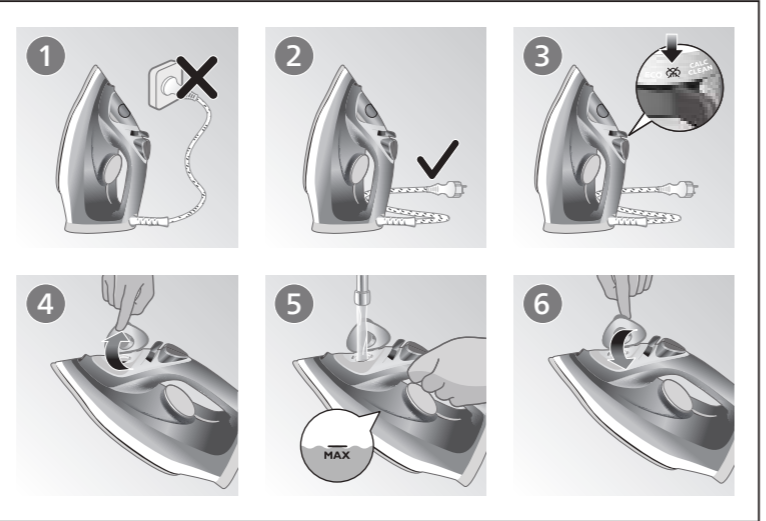
www.philips.com/support



1



www.philips.com/support



2



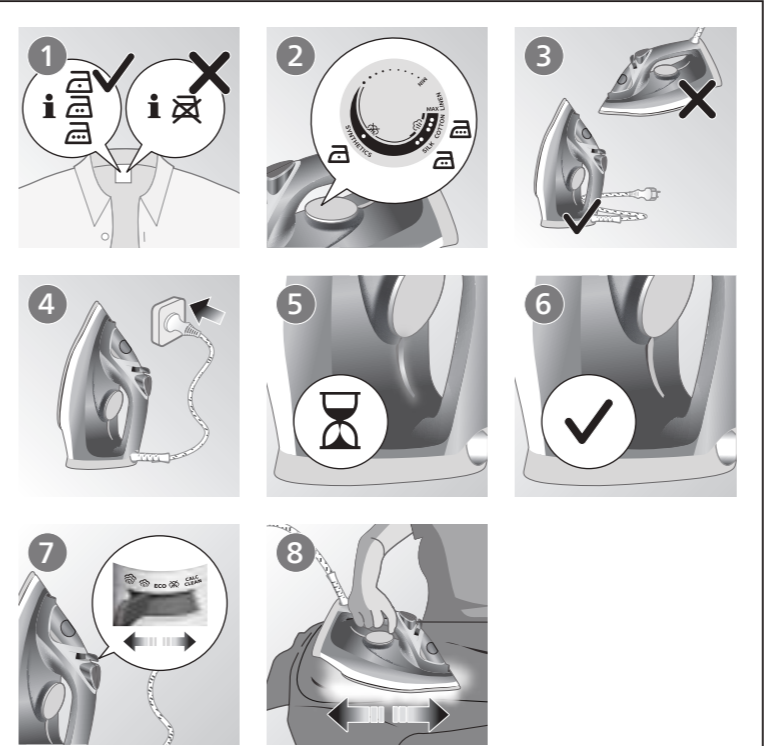
www.philips.com/support

	MAX LINEN	/ *
	COTTON	/ *
	SILK	ECO
	SYNTHETICS	

2



www.philips.com/support



EN Preparing for use
Smoke can be visible during the first use, and it is normal. This ceases after a short while.

FR Avant utilisation
De la fumée peut être visible lors de la première utilisation. Il s'agit d'un phénomène normal. Cela cesse après un bref instant.

PT Preparar para a utilização
É possível que veja fumo durante a primeira utilização. Isto é normal. Isto deixa de acontecer passado pouco tempo.

FA آماده سازی برای استفاده
ممکن است در اولین استفاده، دود از دستگاه خارج شود که این امر عادی است. این حالت بعد از مدت کمی رفع می شود.

AR التحضير للاستخدام
قد يتصاعد الدخان عند الاستخدام للمرة الأولى، وهذا أمر طبيعي. سيتوقف هذا الأمر بعد وقت قصير.

2



www.philips.com/support

